

DTM Series Copper Lug (with barrier)



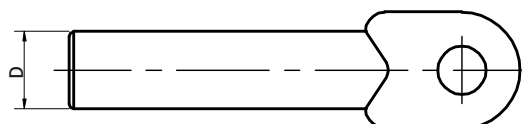
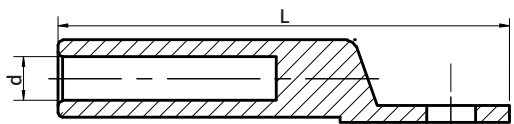
Description:

DTM copper lug is applicable to connection between electrical cable and electrical appliance in power distribution, specifically applied in heat shrink and cold shrink outdoor termination kit.

Material:

Made of quality T2 Cu tube, of which Cu content $\geq 99.9\%$. It demonstrates excellent conductivity. Its electrical conductivity reaches 97% IACS at least. Our copper material conforms to national standard: GB/T5231-2001.

Specification



Product Model	Dimension		
	OD (D)	ID (d)	Length (L)
DTM-10	9	5.5	66
DTM-16	10	6.0	67
DTM-25	11	7.0	70
DTM-35	12	8.5	79
DTM-50	14	9.6	87
DTM-70	16	12.0	95
DTM-95	18	13.0	105
DTM-120	20	15.0	112
DTM-150	22	16.0	118
DTM-185	25	18.0	125
DTM-240	27	20.0	136
DTM-300	30	23.0	160
DTM-400	34	26.0	165
DTM-500	38	29.0	190
DTM-630	45	34.0	220

Remark: the critical dimension tolerance is executed according to GB/T14315-2008