

DT Series Copper Lug (without barrier)



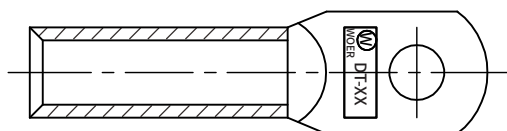
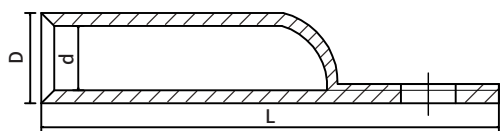
Description:

DT copper lug is applicable to connection between electrical cable and electrical appliance in power distribution, specifically applied in heat shrink and cold shrink indoor termination kit.

Material:

Made of quality T2 Cu tube, of which Cu content $\geq 99.9\%$. It demonstrates excellent conductivity. Its electrical conductivity reaches 97% IACS at least. Our copper material conforms to national standard: GB/T5231-2001.

Specification



Product Model	Dimension		
	OD (D)	ID (d)	Length (L)
DT-10	9	5.0	50
DT-16	10	6.0	56
DT-25	11	7.0	60
DT-35	12	8.0	65
DT-50	14	10.0	71
DT-70	16	12.0	80
DT-95	18	13.0	86
DT-120	20	15.0	95
DT-150	22	16.0	103
DT-185	25	18.0	115
DT-240	27	20.0	120
DT-300	30	24.0	135
DT-400	34	26.0	150
DT-500	38	30.0	170
DT-630	45	35.0	210

Remark: the critical dimension tolerance is executed according to GB/T14315-2008